

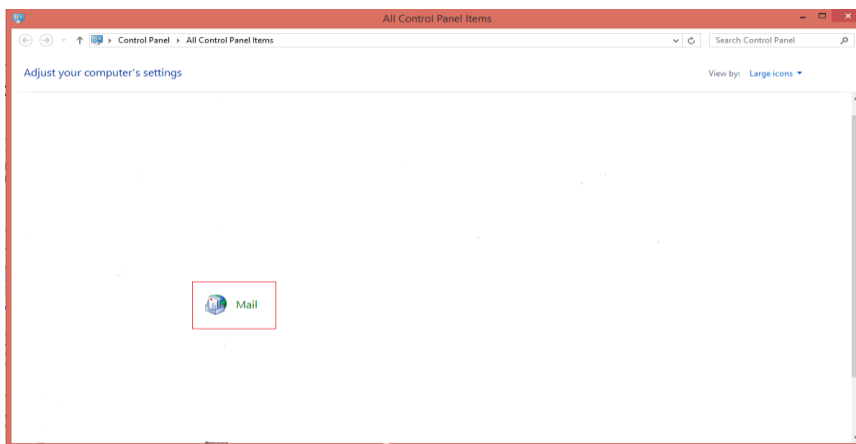
# Instruction on setting up of new Exchange e-mail account in asp (if Outlook 2010 is already used)

## 1 STEP

---

1.1. In order to create a new Exchange e-mail account, click on the **Start** and enter **Control Panel** in search box.

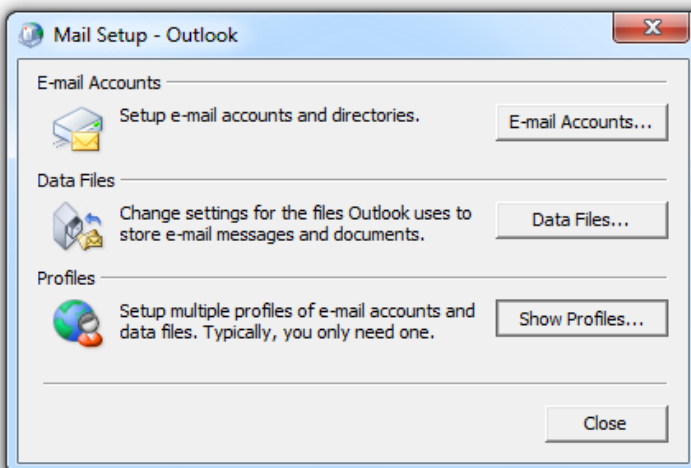
1.2. In the Control Panel window click on **Mail**.



## 2 STEP

---

In window Mail Setup – Outlook click on **Show Profiles**.

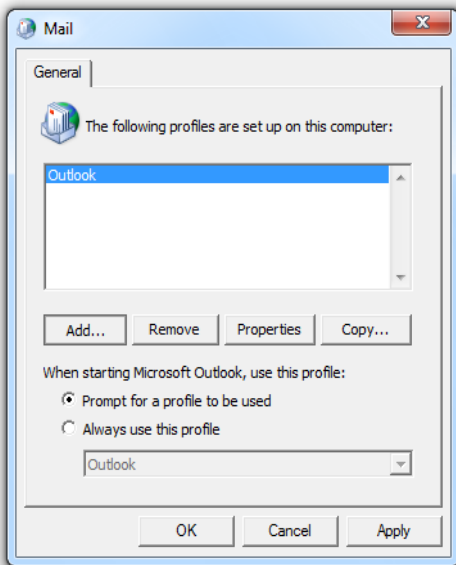


### 3 STEP

---

3.1. In window Mail check an option **Prompt for a profile to be used**.

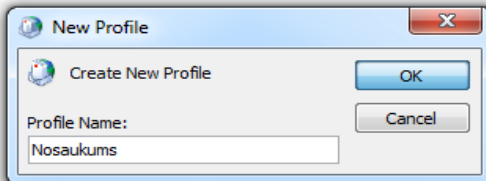
3.2. In order to add new e-mail profile, click on **Add**.



### 4 STEP

---

In field **New Profile** enter a new mail profile name.

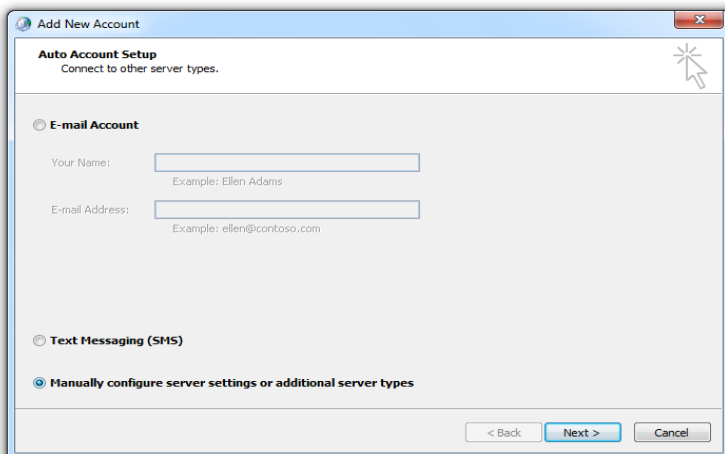


### 5 STEP

---

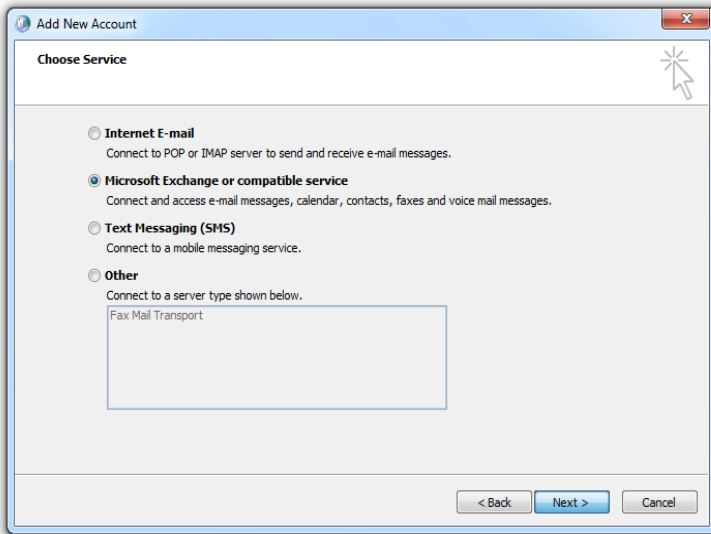
In window Add New Account check next to **Manually configure server settings or additional server types**.

Click on **Next**.



## 6 STEP

Choose service by checking next to **Microsoft Exchange or compatible service**. Click on **Next**.

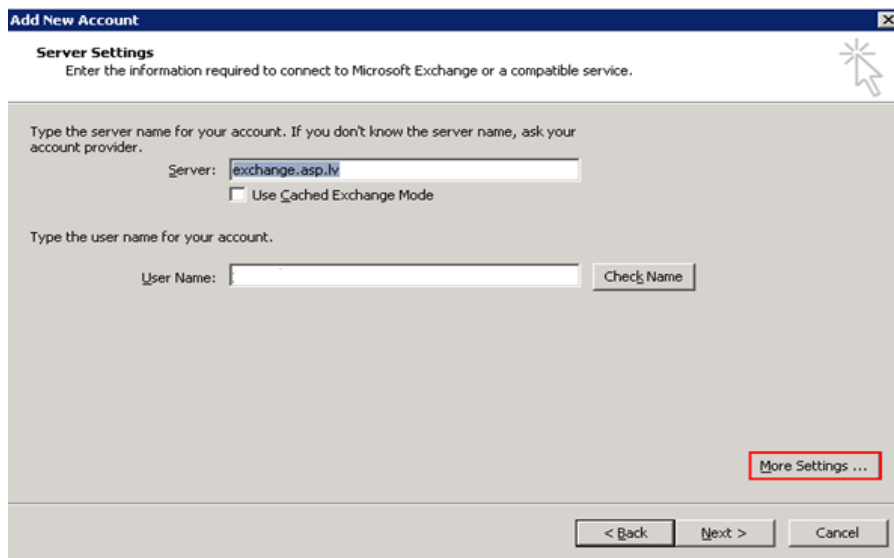


## 7 STEP

7.1. Enter server address and your e-mail address.

- a) **Server:** exchange.asp.lv
- b) **User Name:** Your name and surname

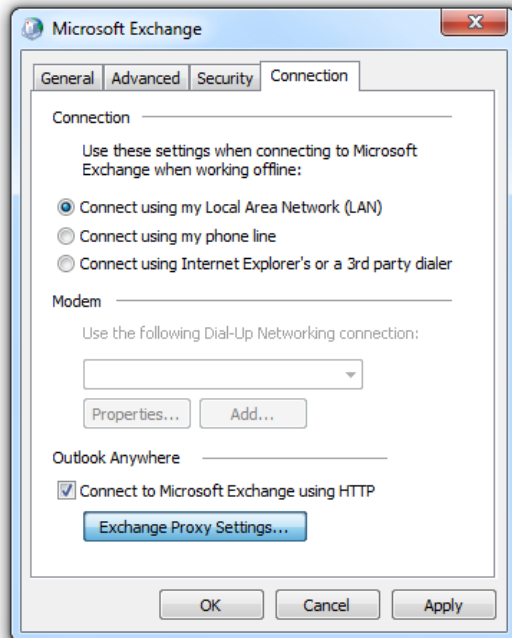
7.2. Click on **More Settings ...**



## 8 STEP

Open field **Connection**:

- a) Check next to **Connect to Microsoft Exchange using HTTP**
- b) Click on **Exchange Proxy Settings...**

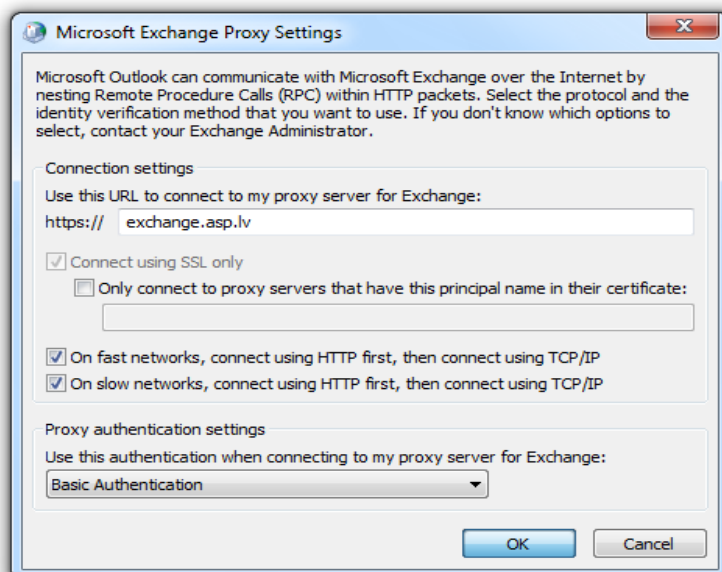


## 9 STEP

In window Microsoft Exchange Proxy Settings select the following parameters:

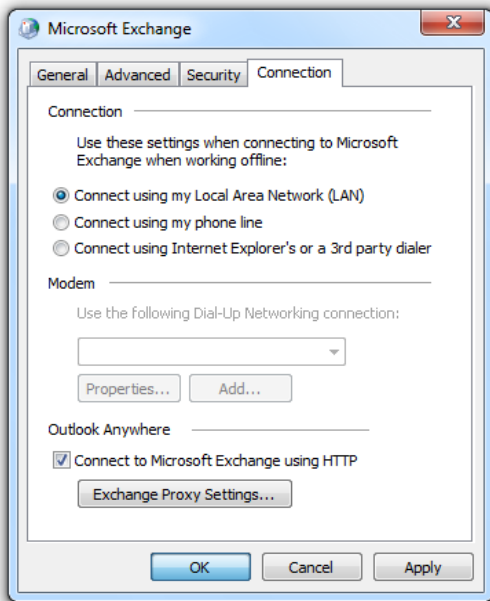
- a) In field **Use this URL to connect to my proxy server for Exchange** enter: exchange.asp.lv
- b) Check next to **On fast networks, connect using HTTP first, then connect using TCP/IP**
- c) Check next to **On slow networks, connect using HTTP first, then connect using TCP/IP**
- d) In field **Use this authentication when connecting to my proxy server for Exchange** select **Basic Authentication**

Click on **OK**.



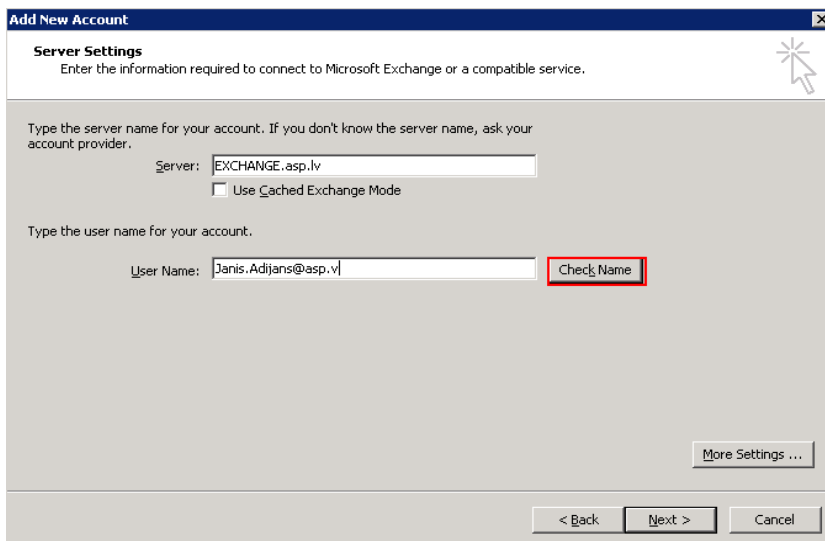
## 10 STEP

In next window click on **OK**.



## 11 STEP

Click on **Check Name**.

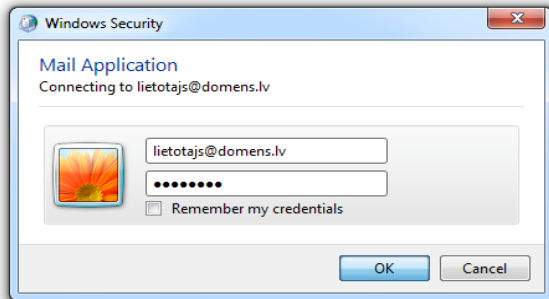


## 12 STEP

---

12.1. Enter your Exchange account e-mail address and password that you have received in service confirmation e-mail.

12.2. Click on **OK**.



## 13 STEP

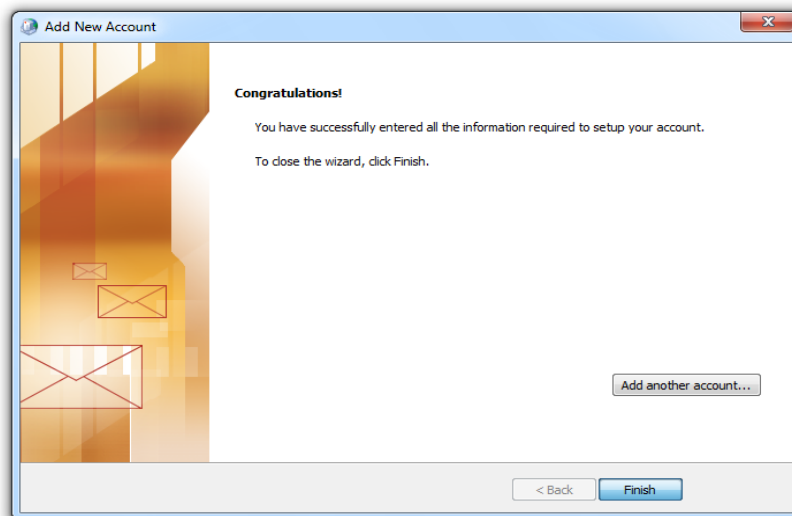
---

If the data entered correctly, the fields **Server** and **User Name** will be underlined. Click on **Next**.

## 14 STEP

---

Click on **Finish**.



## 15 STEP

---

In order to start working, click on Microsoft Outlook.